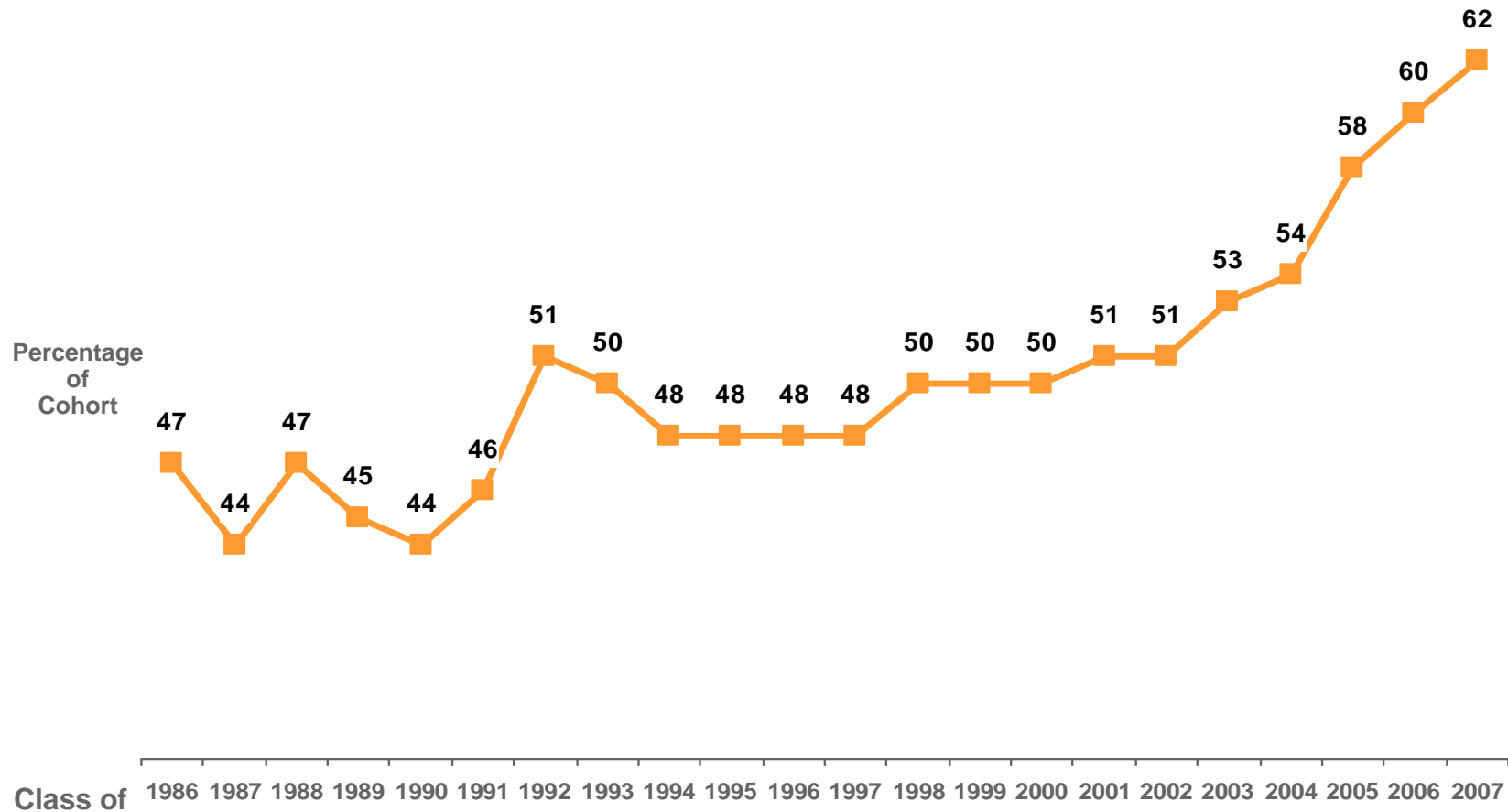


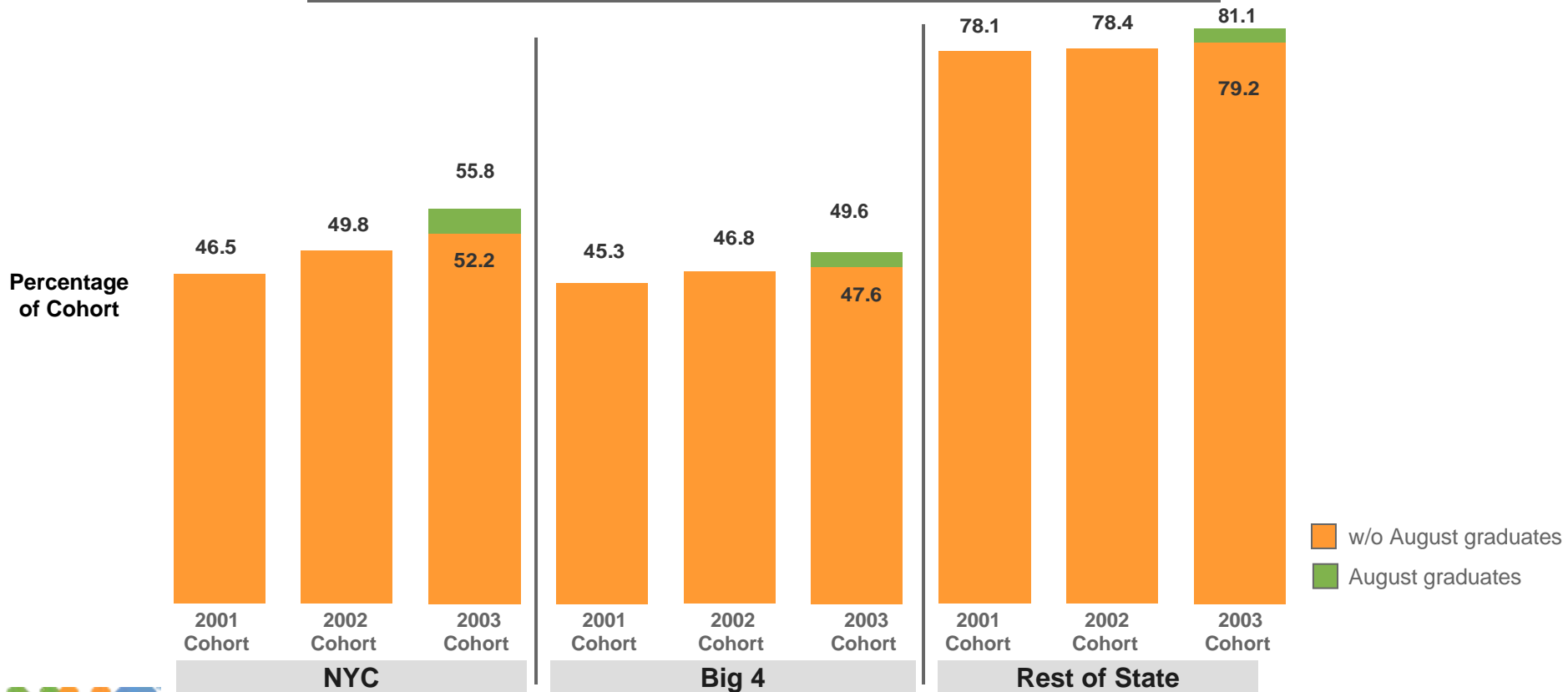
NYC ACHIEVEMENT DATA

STEADY GROWTH IN FOUR YEAR GRADUATION RATE SINCE '02 USING TRADITIONAL CITY METHOD



NYC COMPARED TO BIG 4 & REST OF STATE 4-YEAR GRADUATION RATE

	2001-2003 Cohort Change w/o August graduates	2001-2003 Cohort Change w/ August graduates
Rest of State	+ 1.1 pts.	+ 3.0 pts.
New York City	+ 5.7 pts.	+ 9.3 pts.
Big Four	+ 2.3 pts.	+ 4.3 pts.

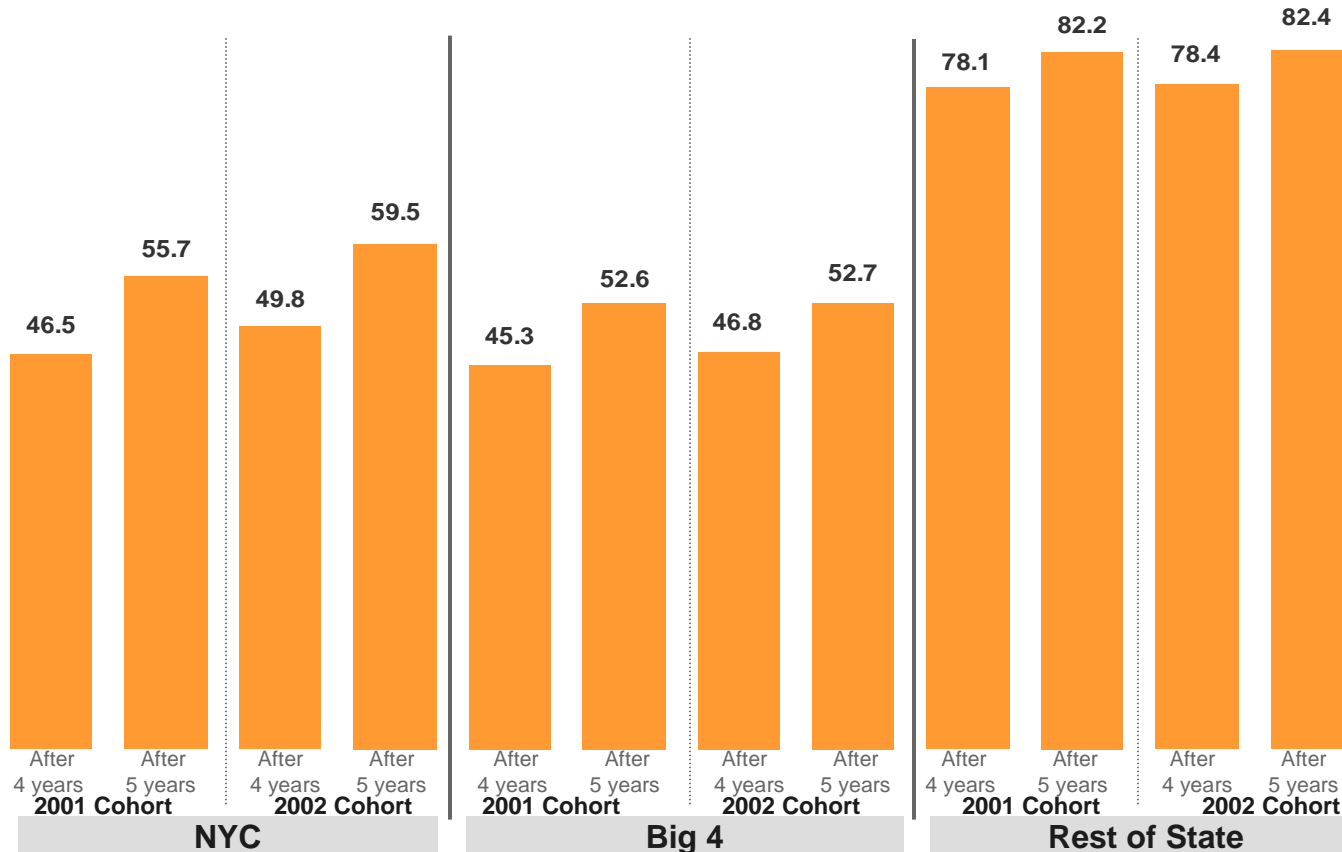


Note: The New York State calculation includes Local and Regents Diplomas and all students with disabilities. It does not include GEDs or IEPs. The State started including August graduates for the first time this year. Big 4 = Buffalo, Rochester, Syracuse, and Yonkers. Rest of State = NYS – NYC – Big 4.

NYC COMPARED TO BIG 4 & REST OF STATE 5-YEAR GRADUATION RATE

	2001 Cohort 4- to 5-year Rate Change	2002 Cohort 4- to 5-year Rate Change
Rest of State	+ 4.1 pts.	+ 4.0 pts.
New York City	+ 9.2 pts.	+ 9.7 pts.
Big Four	+ 7.3 pts.	+ 5.9 pts.

Percentage
of Cohort

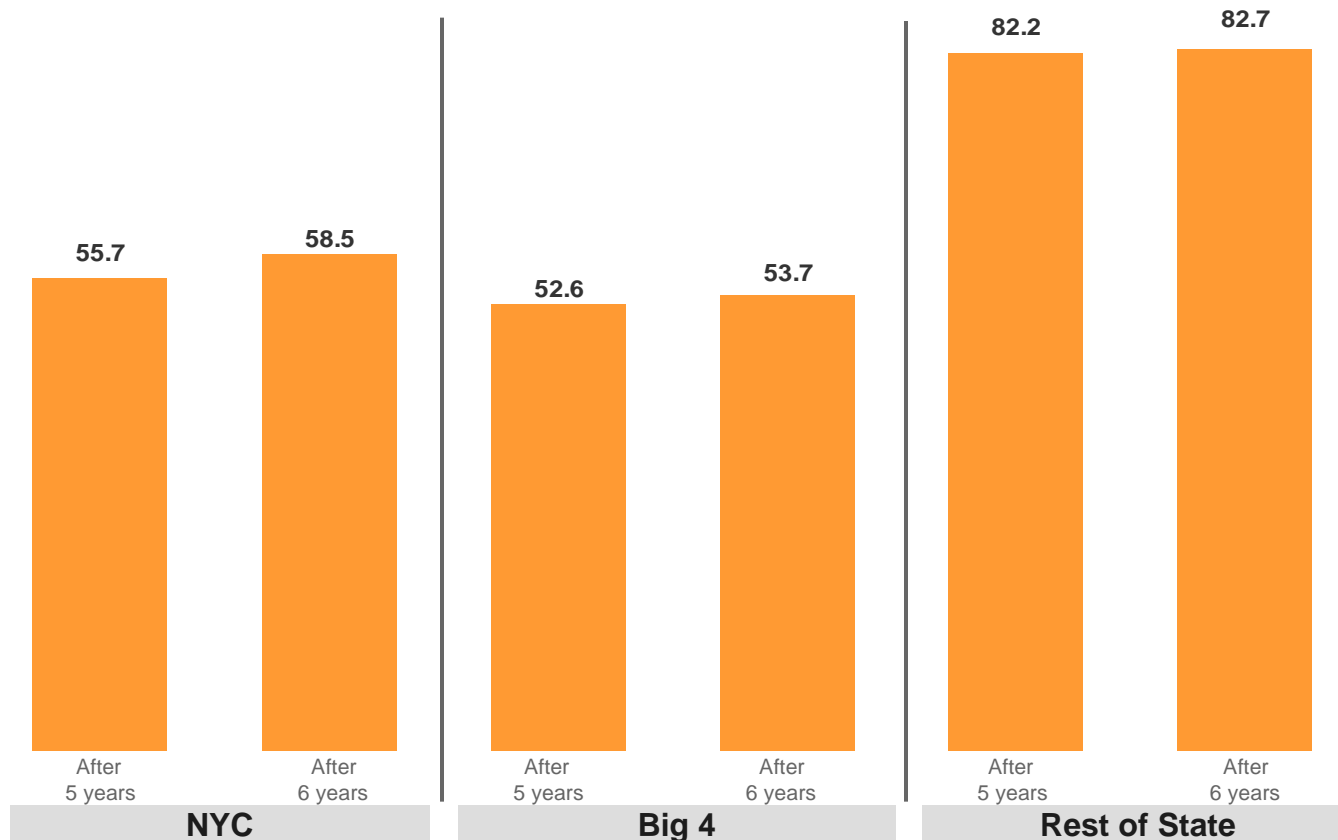


Note: The New York State calculation includes Local and Regents Diplomas and all students with disabilities. It does not include GEDs or IEPs. The State started including August graduates for the first time this year. Big 4 = Buffalo, Rochester, Syracuse, and Yonkers. Rest of State = NYS – NYC – Big 4.

NYC COMPARED TO BIG 4 & REST OF STATE 6-YEAR GRADUATION RATE

2001 Cohort 5- to 6-year Rate Change	
Rest of State	+ 0.5 pts.
New York City	+ 2.8 pts.
Big Four	+ 1.1 pts.

Percentage
of 2001
Cohort



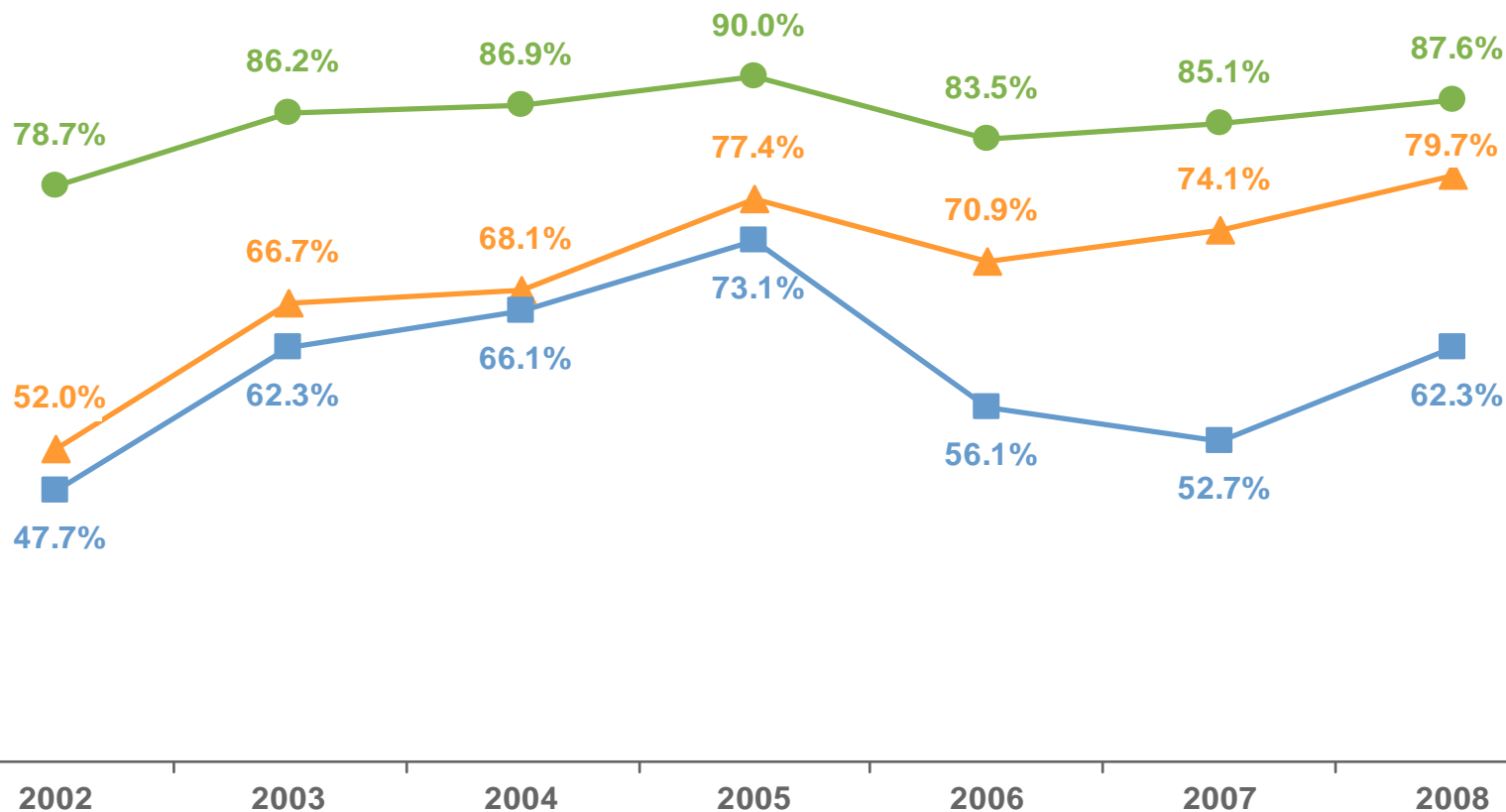
Note: The New York State calculation includes Local and Regents Diplomas and all students with disabilities. It does not include GEDs or IEPs. The State started including August graduates for the first time this year. Big 4 = Buffalo, Rochester, Syracuse, and Yonkers. Rest of State = NYS – NYC – Big 4.

NYC COMPARED TO BIG 4 & REST OF STATE

MATH GRADE 4

	2002-2008 Change
Rest of State	+ 8.9 pts.
New York City	+ 27.7 pts.
Big Four	+ 14.6 pts.

Percentage of Students in Levels 3+4

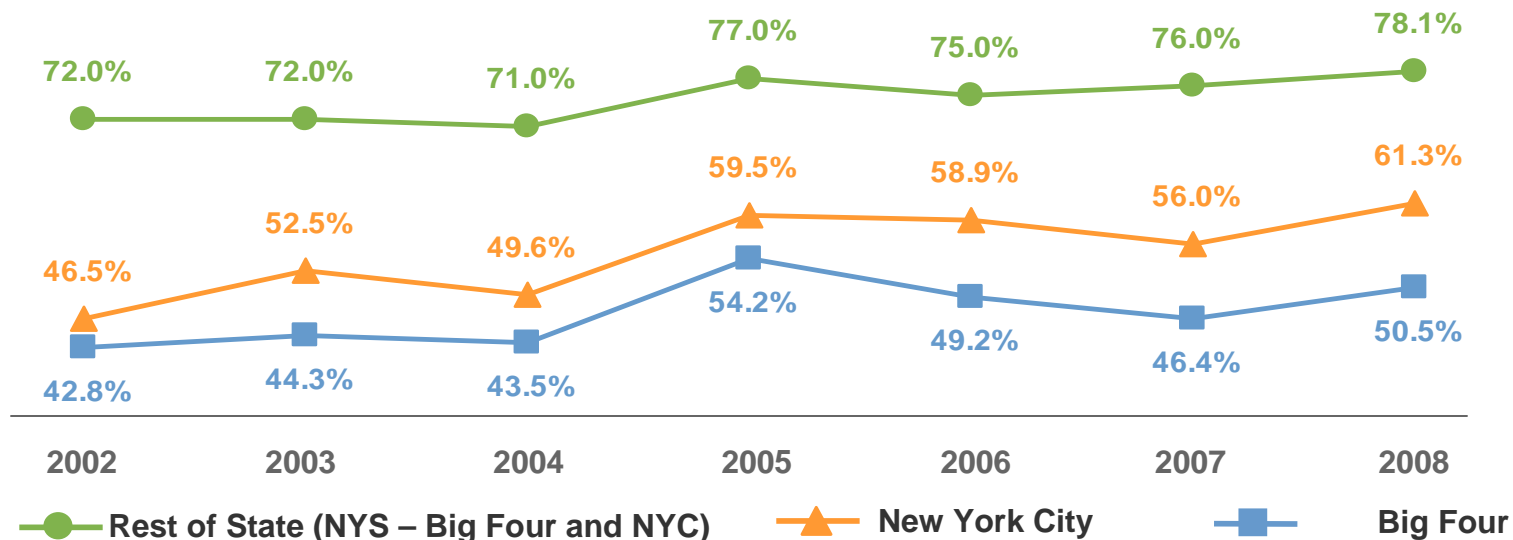


NYC COMPARED TO BIG 4 & REST OF STATE

ELA GRADE 4

2002-2008 Change	
Rest of State	+ 6.1 pts.
New York City	+ 14.8 pts.
Big Four	+ 7.7 pts.

Percentage of Students in Levels 3+4



In 2007, the New York State Education Department updated its testing policy for English Language Learners. ELLs who have attended school in the US for more than one year must take the ELA exam. Previously, ELLs in an English Language School System for less than 3 years (or qualified for a 4th or 5th year extension of services) were exempt from taking the ELA.

ELLs Tested	2006		2007	
	# of ELLs	% of Tested Students	# of ELLs	% of Tested Students
Rest of State*	1,411	1.1	3,327	2.6
New York City	2,938	4.6	10,873	15.5

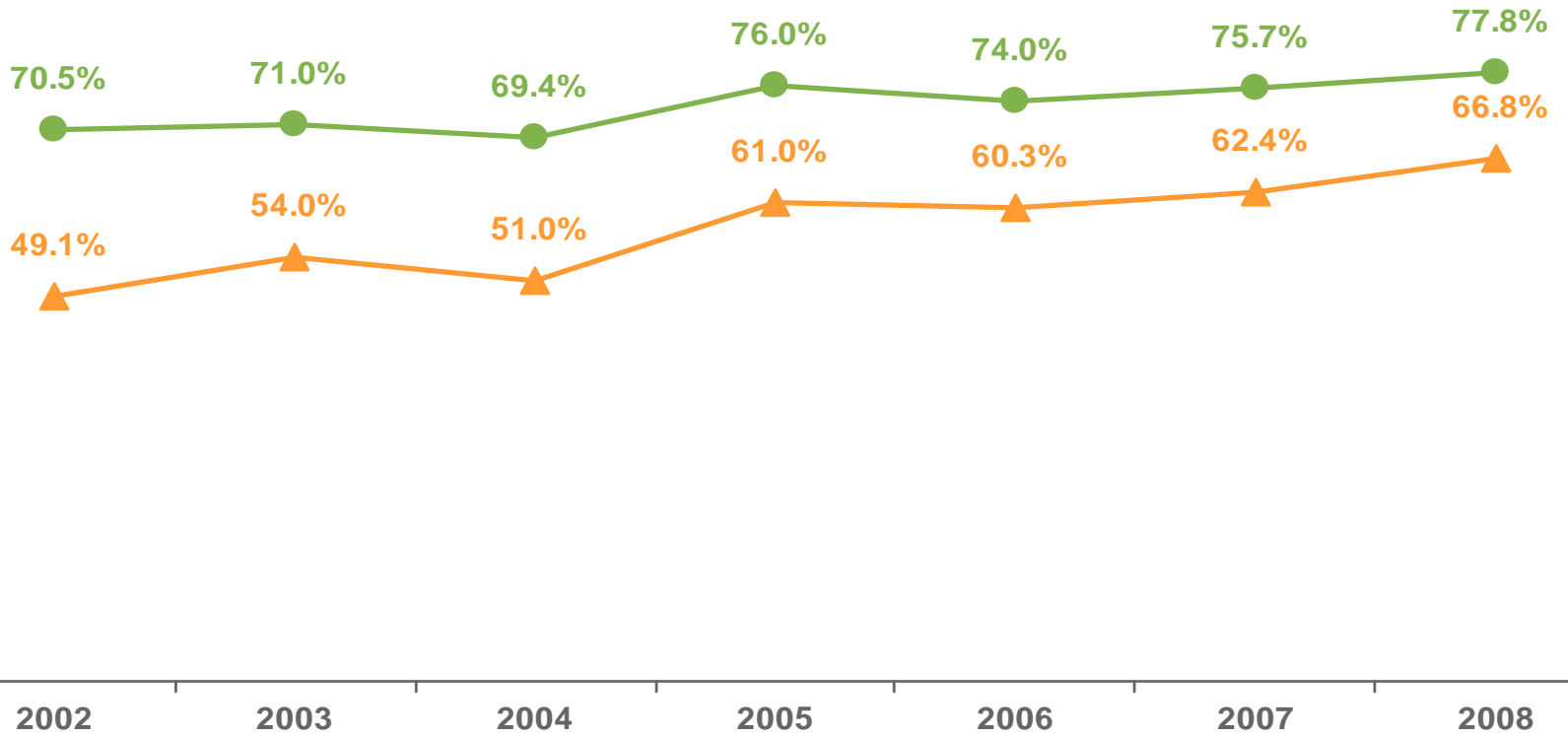
Note: Rest of State = NYS - Big 4 (Buffalo, Rochester, Syracuse, and Yonkers) – NYC.

* Data on the number of English Language Learners tested is not available for Big Four, therefore Rest of State for these data = NYS – NYC.

NYC COMPARED TO REST OF STATE ELA GRADE 4, ENGLISH PROFICIENT STUDENTS

2002-2008 Change	
Rest of State	+ 7.3 pts.
New York City	+ 17.7 pts.

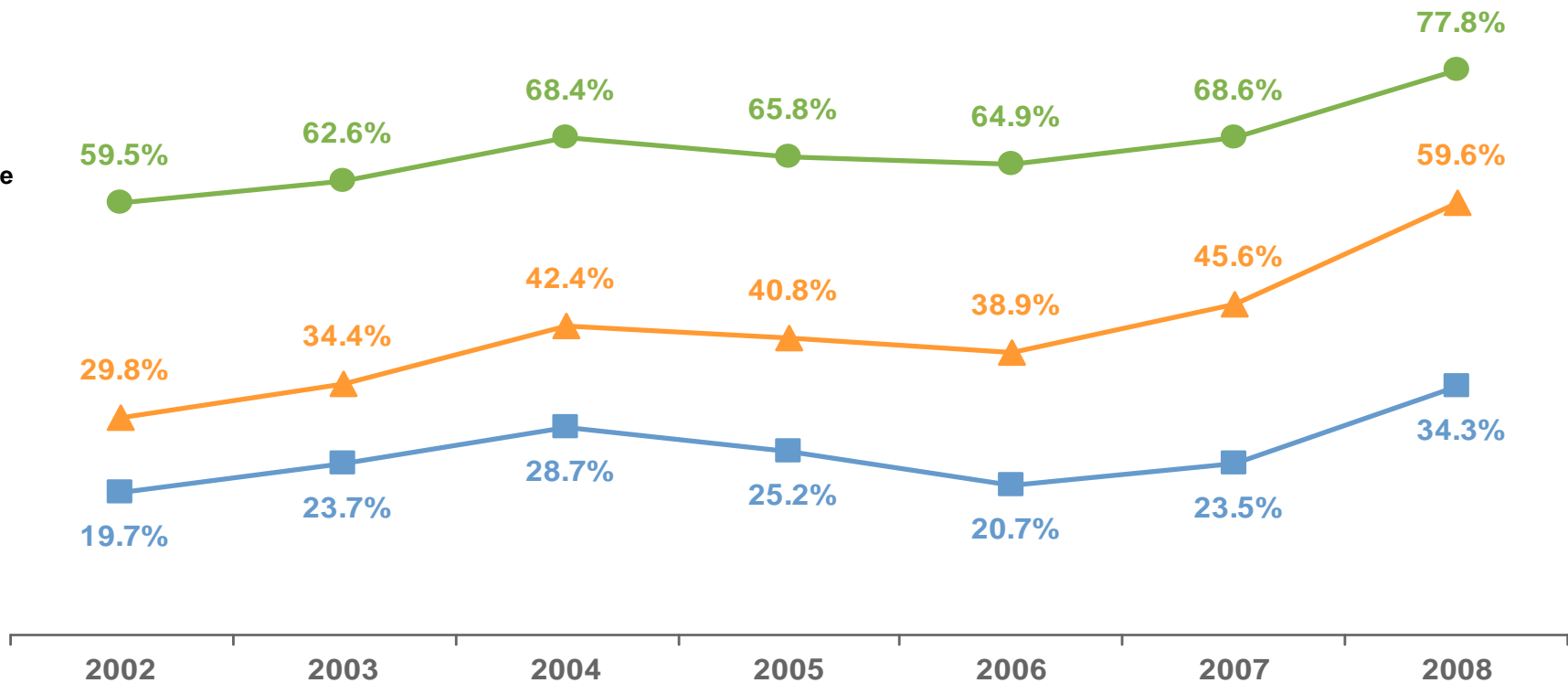
Percentage of Students in Levels 3+4



NYC COMPARED TO BIG 4 & REST OF STATE MATH GRADE 8

	2002-2008 Change
Rest of State	+ 18.3 pts.
New York City	+ 29.8 pts.
Big Four	+ 14.6 pts.

Percentage of Students in Levels 3+4

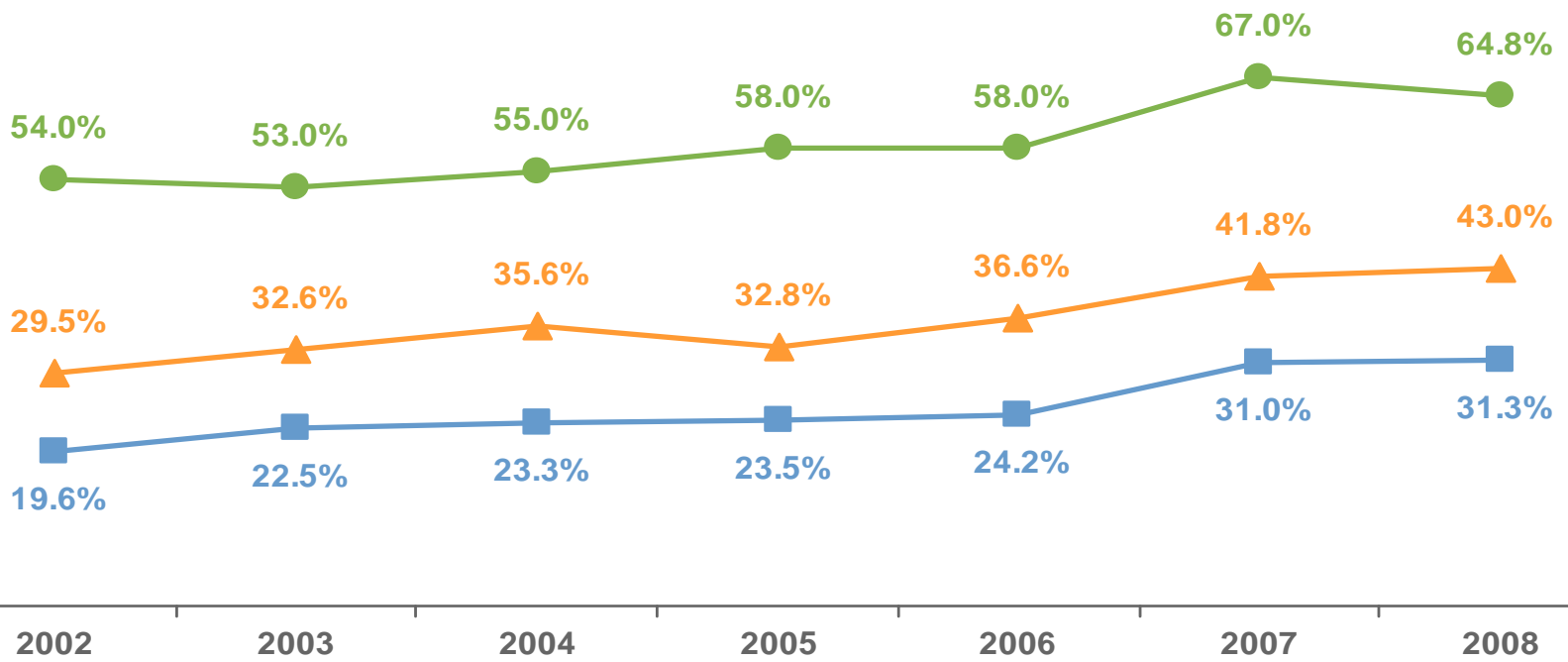


NYC COMPARED TO BIG 4 & REST OF STATE

ELA GRADE 8

	2002-2008 Change
Rest of State	+ 10.8 pts.
New York City	+ 13.5 pts.
Big Four	+ 11.7 pts.

Percentage of Students in Levels 3+4



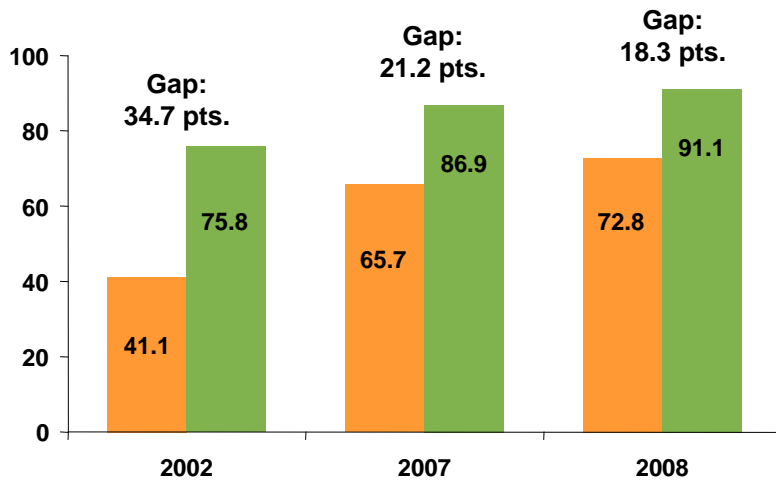
● Rest of State (NYS – Big Four and NYC)
 ▲ New York City
 ■ Big Four

Note: Rest of State = NYS - Big 4 (Buffalo, Rochester, Syracuse, and Yonkers) – NYC

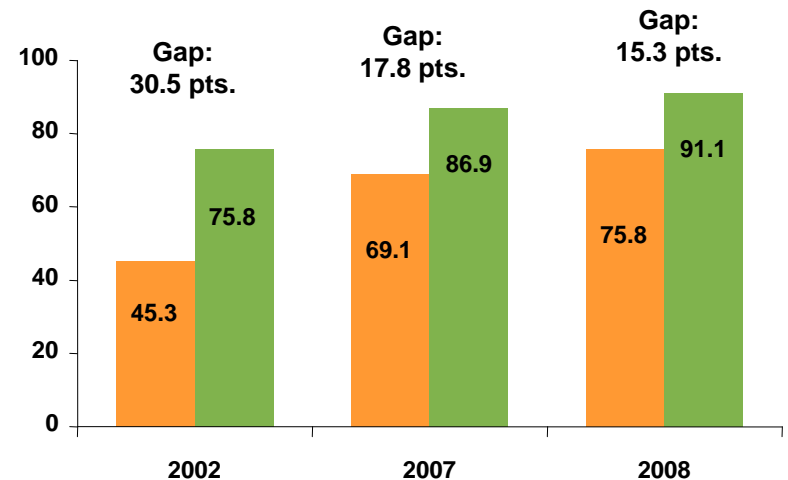
NARROWING THE ACHIEVEMENT GAP (4TH GRADE)

Percent of Students at Levels 3 + 4

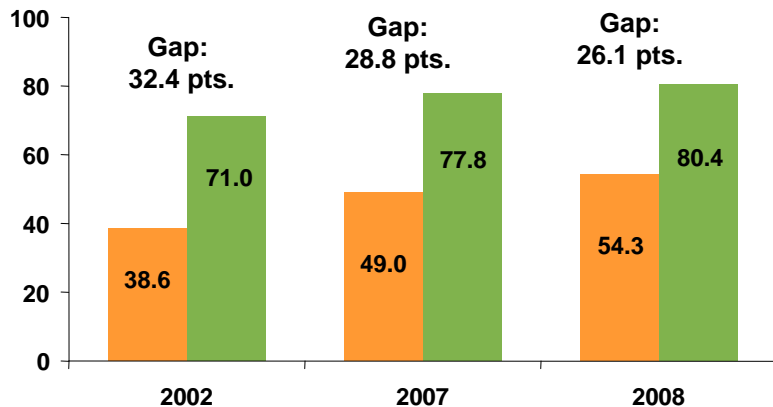
Closing the Black-White Gap Math



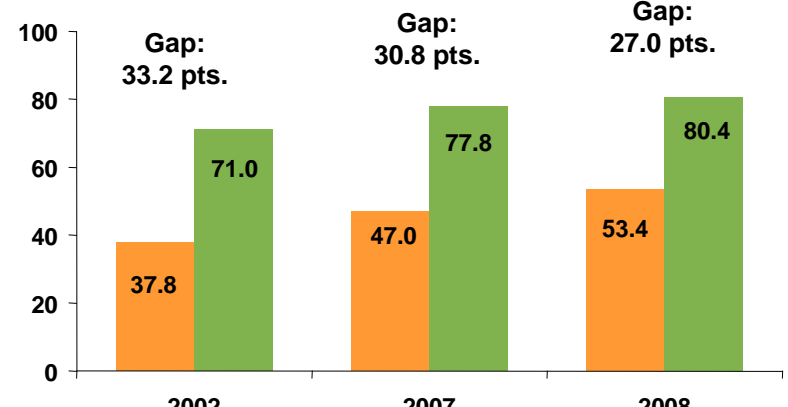
Closing the Hispanic-White Gap Math



Closing the Black-White Gap ELA



Closing the Hispanic-White Gap ELA



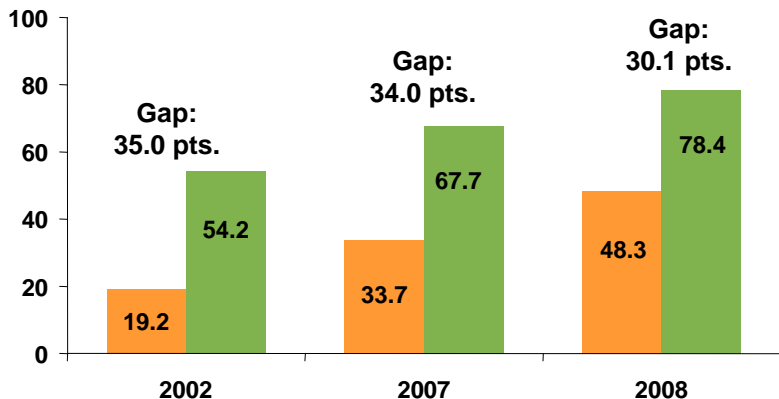
Black/Hispanic Students

White Students

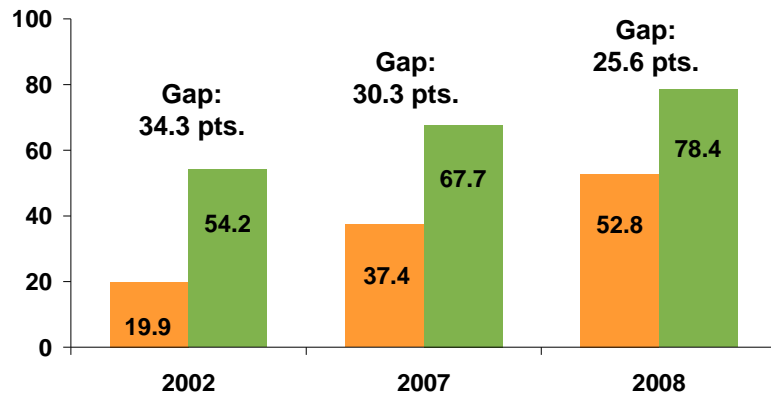
NARROWING THE ACHIEVEMENT GAP (8TH GRADE)

Percent of Students at Levels 3 + 4

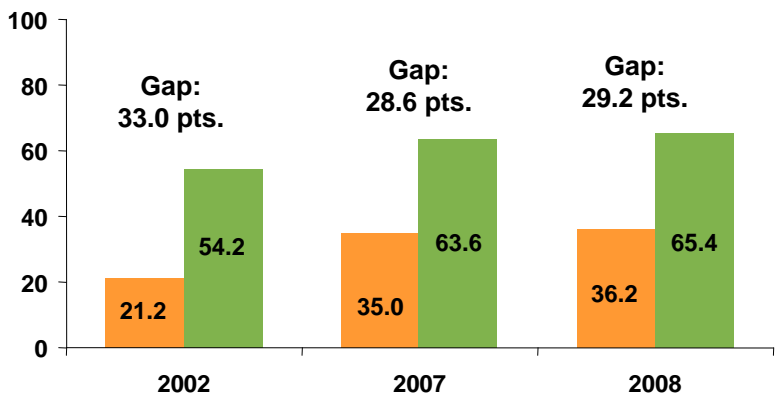
Closing the Black-White Gap Math



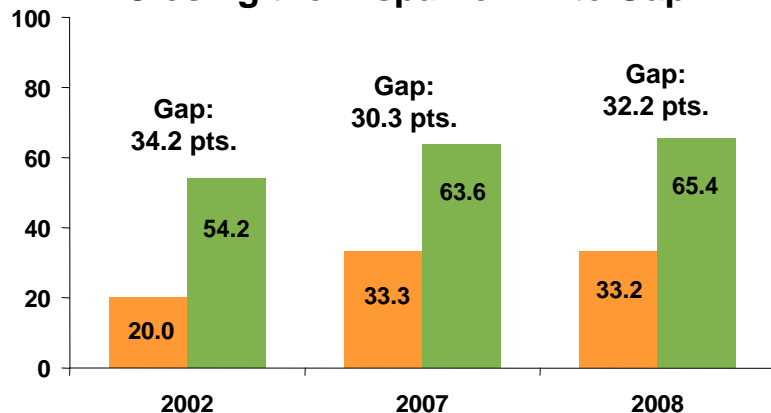
Closing the Hispanic-White Gap Math



Closing the Black-White Gap ELA



Closing the Hispanic-White Gap ELA



Black/ Hispanic Students

White Students

AP PARTICIPATION AND PERFORMANCE

New York City
AP Performance by Ethnicity
Number of Students with Scores 3 or Higher*

Ethnicity	2002	2003	2004	2005	2006	2007	2008	1 Yr % Increase	6 Yr % Increase
Asian	3,010	3,139	3,162	3,436	3,732	4,472	4,770	6.7%	58.5%
Black	715	703	774	668	752	945	1,020	7.9%	42.7%
Hispanic	2,141	2,394	2,245	2,268	2,568	2,516	2,657	5.6%	24.1%
White	2,854	2,818	2,762	2,770	2,850	2,974	2,991	0.6%	4.8%
Other	547	591	684	564	724	863	881	2.1%	61.1%
No Response	346	323	314	325	483	362	332	-8.3%	-4.0%
Total	9,613	9,968	9,941	10,031	11,109	12,132	12,651	4.3%	31.6%

New York City
AP Participation by Ethnicity
Number of Students Taking One or More Exams

Ethnicity	2002	2003	2004	2005	2006	2007	2008	1 Yr % Increase	6 Yr % Increase
Asian	4,649	4,875	4,943	5,336	5,798	6,591	6,946	5.4%	49.4%
Black	2,422	2,490	2,408	2,604	3,122	3,390	3,825	12.8%	57.9%
Hispanic	3,532	4,091	4,005	4,316	4,725	5,211	5,616	7.8%	59.0%
White	4,551	4,449	4,408	4,441	4,486	4,523	4,608	1.9%	1.3%
Other	1,140	1,279	1,399	1,295	1,726	1,882	1,889	0.4%	65.7%
No Response	677	624	636	705	913	769	734	-4.6%	8.4%
Total	16,971	17,808	17,799	18,697	20,770	22,366	23,618	5.6%	39.2%

2007 Trial Urban District Assessment

Achievement-Level Results in Grade 4 Mathematics

Percent At or Above Basic

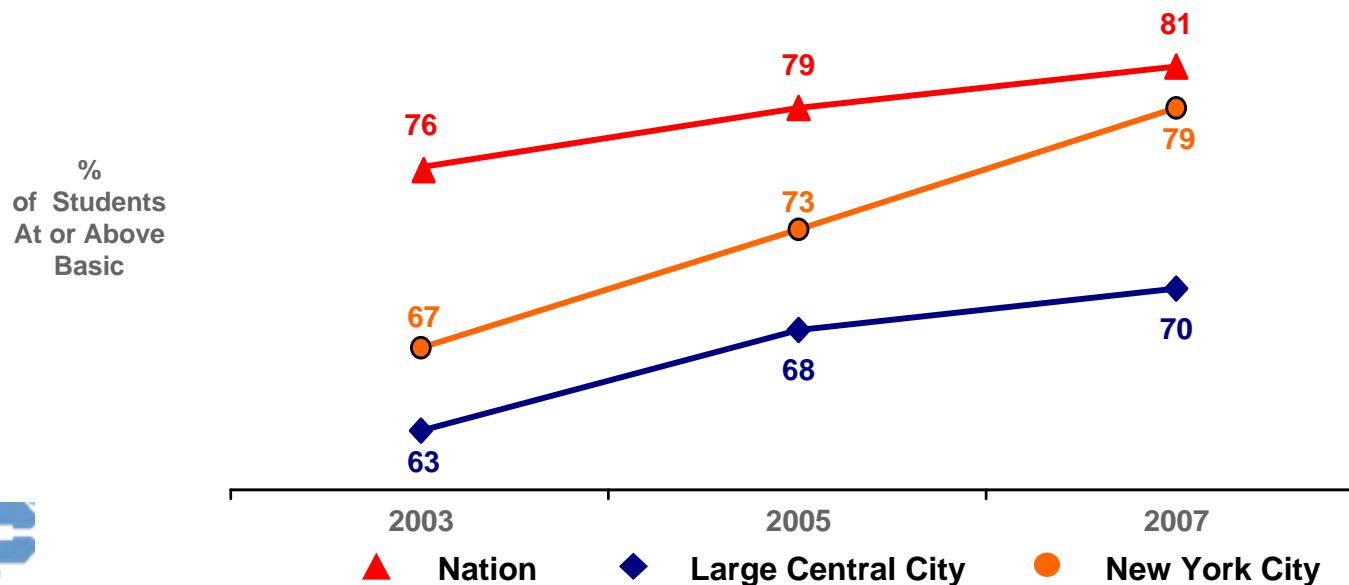
All Students

2003-2007 Change:

New York City + 12

Large Central City + 7

Nation + 5



2007 Trial Urban District Assessment

Achievement-Level Results in Grade 4 Mathematics

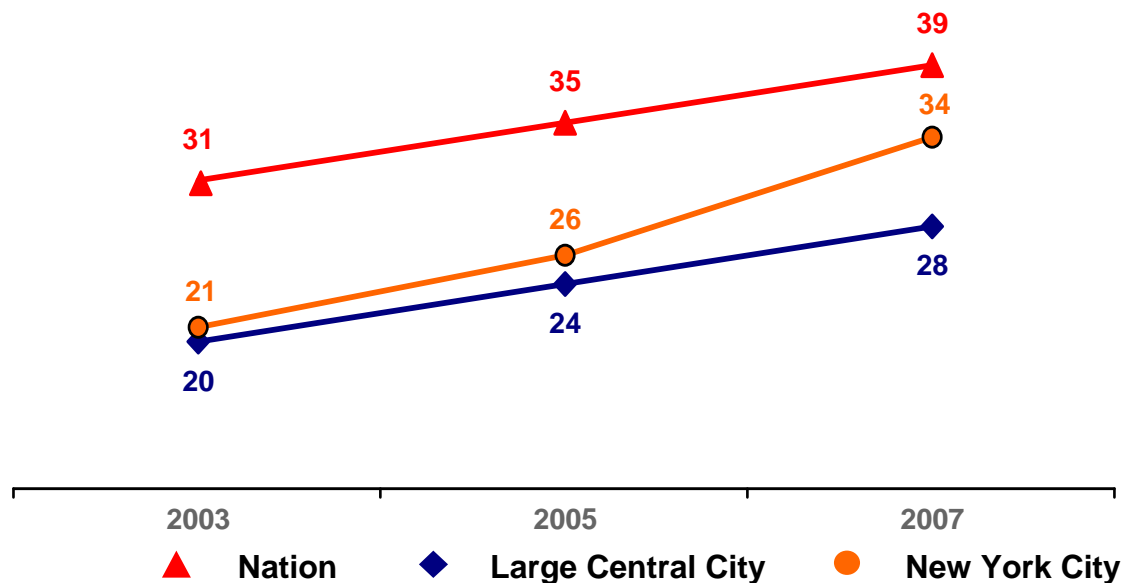
Percent At or Above Proficient

All Students

2003-2007 Change:

New York City	+ 13
Large Central City	+ 8
Nation	+ 8

%
of Students
At or Above
Proficient



2007 Trial Urban District Assessment

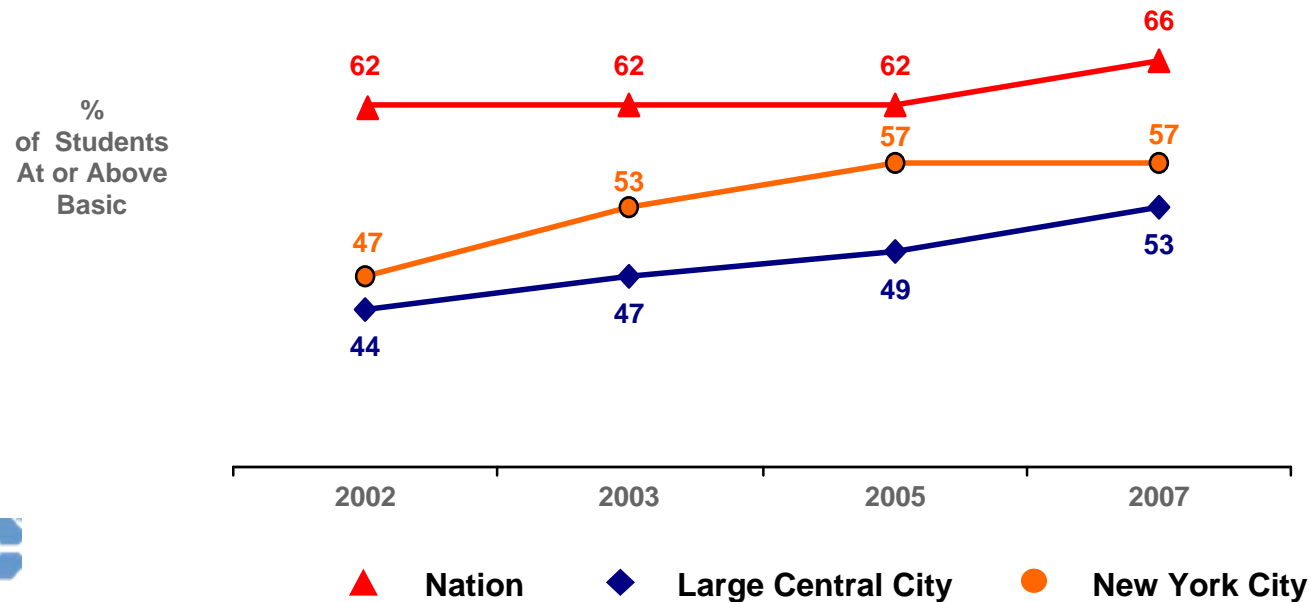
Achievement-Level Results in Grade 4 Reading

Percent At or Above Basic

All Students

2002-2007 Change:

New York City	+10
Large Central City	+ 9
Nation	+ 4



2007 Trial Urban District Assessment

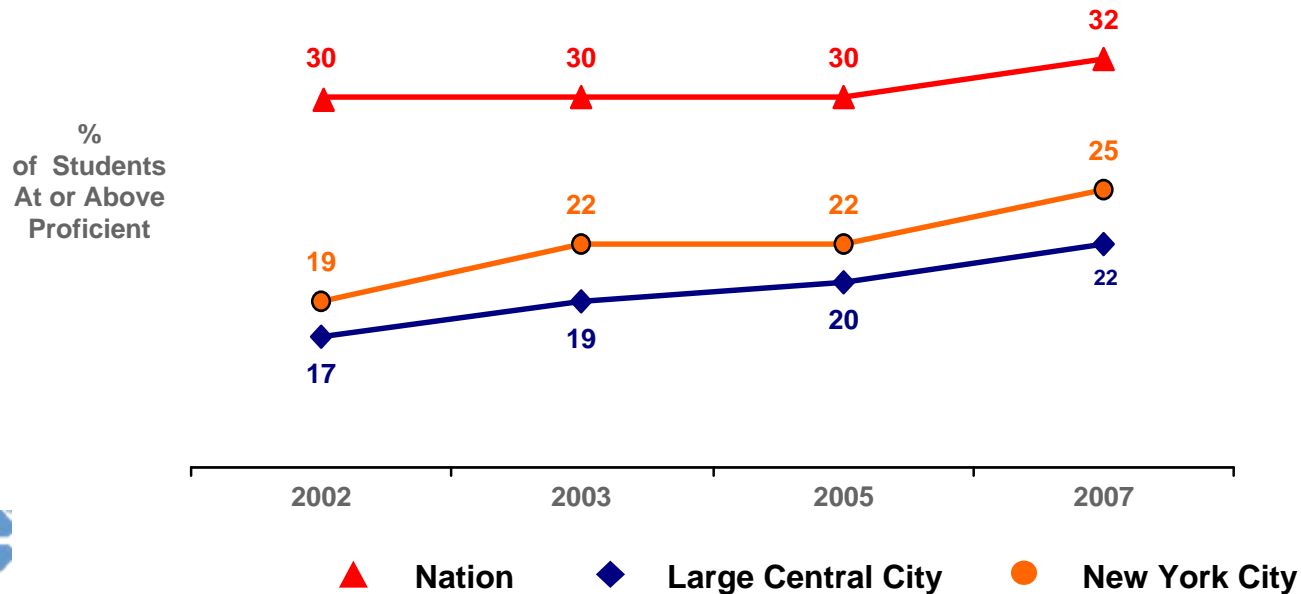
Achievement-Level Results in Grade 4 Reading

Percent At or Above Proficient

All Students

2002-2007 Change:

New York City	+ 6
Large Central City	+ 5
Nation	+ 2



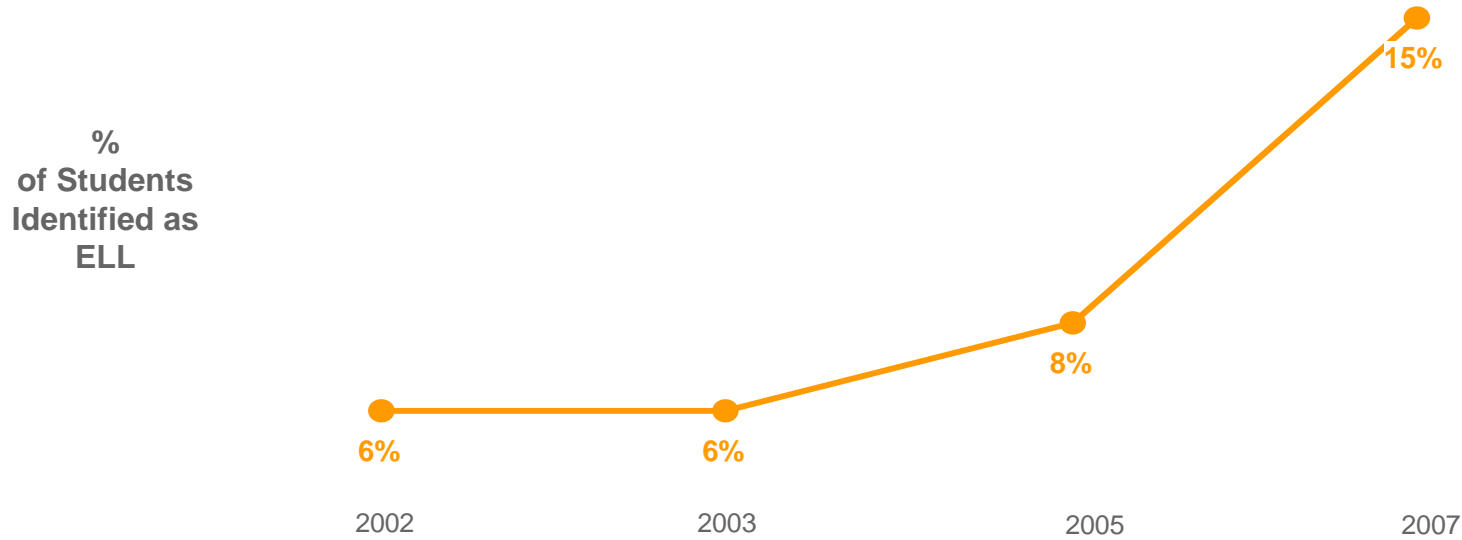
2007 Trial Urban District Assessment

New York City English Language Learners (ELLs)

Reading Grade 4

In 2007, the New York State Education Department updated its testing policy for English Language Learners. Under this new policy, ELLs who attend school in the US for more than one year must take ELA/Reading exams, increasing the percentage of ELLs tested in New York City.

% of Assessed Students Identified as ELL



2007 Trial Urban District Assessment

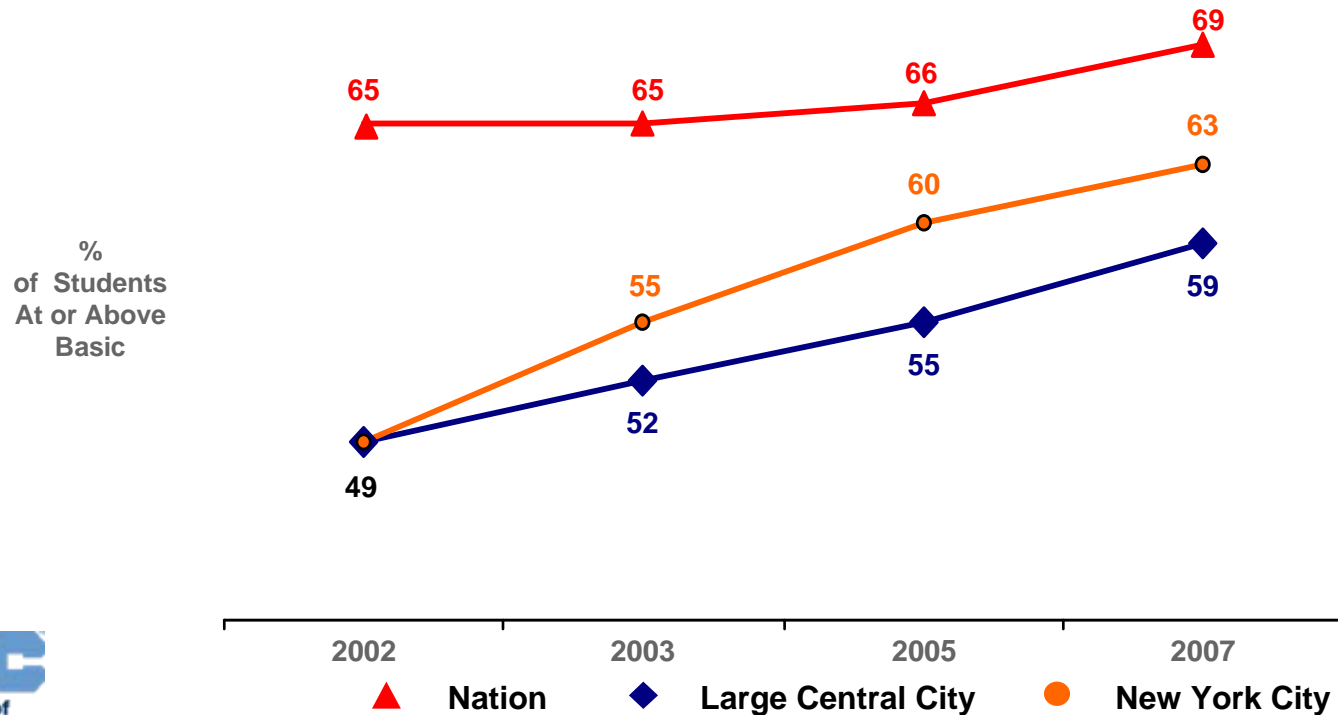
Achievement-Level Results in Grade 4 Reading

Percent At or Above Basic

All English Proficient Students

2002-2007 Change:

New York City	+ 14
Large Central City	+ 10
Nation	+ 4



2007 Trial Urban District Assessment

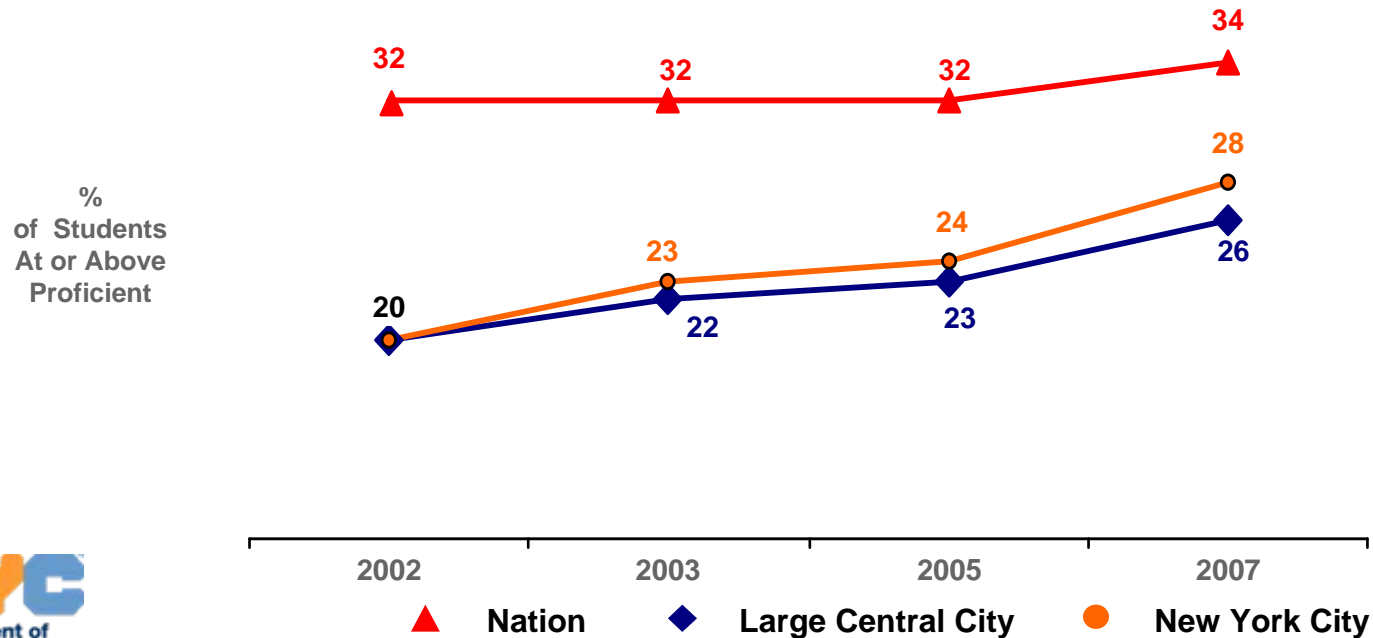
Achievement-Level Results in Grade 4 Reading

Percent At or Above Proficient

All English Proficient Students

2002-2007 Change:

New York City	+ 8
Large Central City	+ 6
Nation	+ 2



2007 Trial Urban District Assessment

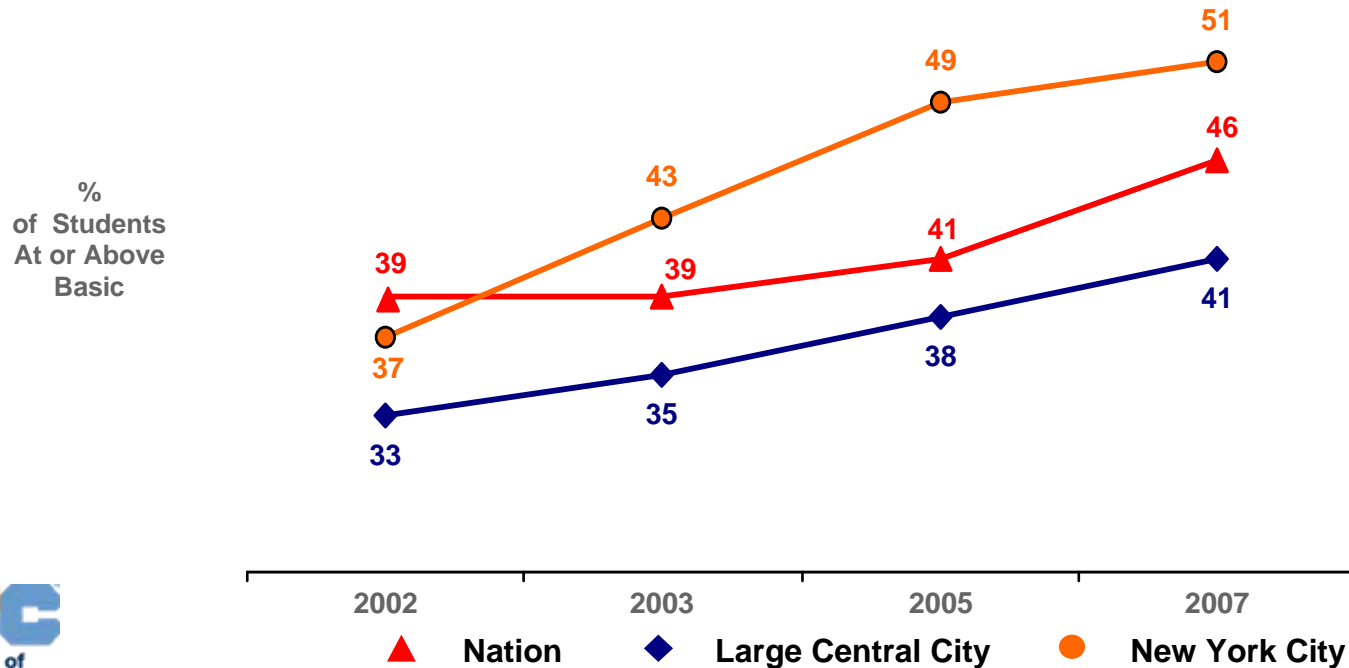
Achievement-Level Results in Grade 4 Reading

Percent At or Above Basic

Black Students

2002-2007 Change:

New York City	+ 14
Large Central City	+ 8
Nation	+ 7



2007 Trial Urban District Assessment

Achievement-Level Results in Grade 4 Reading

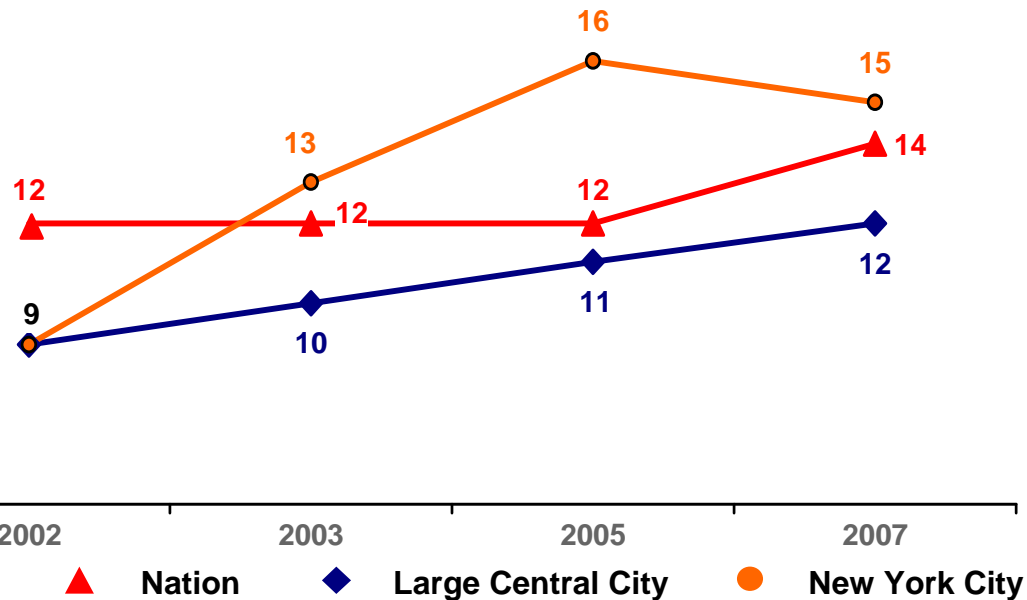
Percent At or Above Proficient

Black Students

2002-2007 Change:

New York City	+ 6
Large Central City	+ 3
Nation	+ 2

%
of Students
At or Above
Proficient



2007 Trial Urban District Assessment

Achievement-Level Results in Grade 8 Mathematics

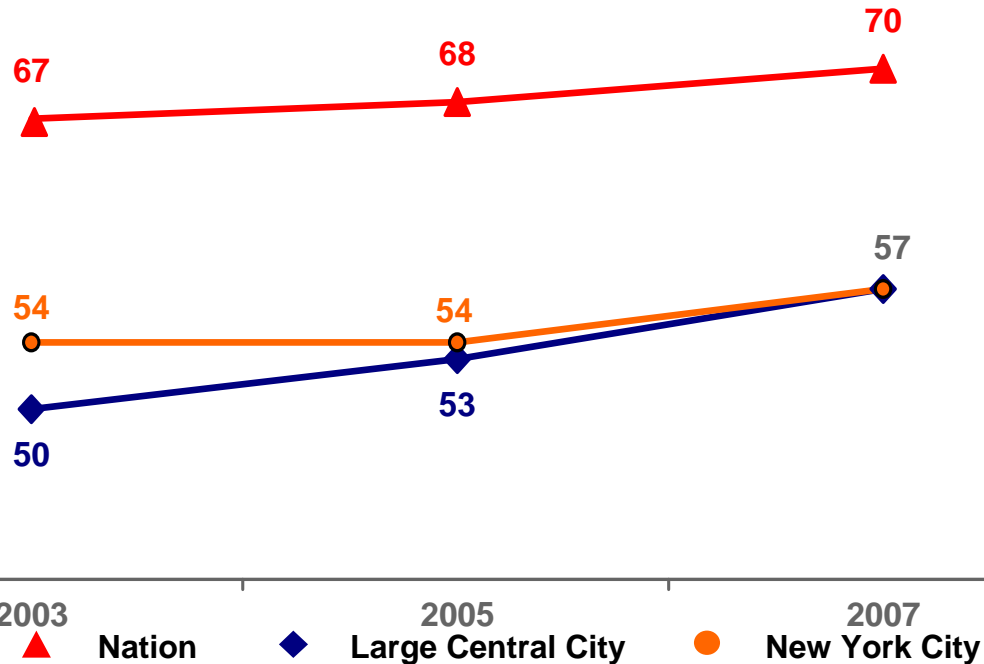
Percent At or Above Basic

All Students

2002-2007 Change:

New York City	+ 3
Large Central City	+ 7
Nation	+ 3

%
of Students
At or Above
Basic



2007 Trial Urban District Assessment

Achievement-Level Results in Grade 8 Reading

Percent At or Above Basic

All Students

2002-2007 Change:

New York City	- 3
Large Central City	+ 2
Nation	+ 1

%
of Students
At or Above
Basic

